

B500U BOLT ACTION LOCK



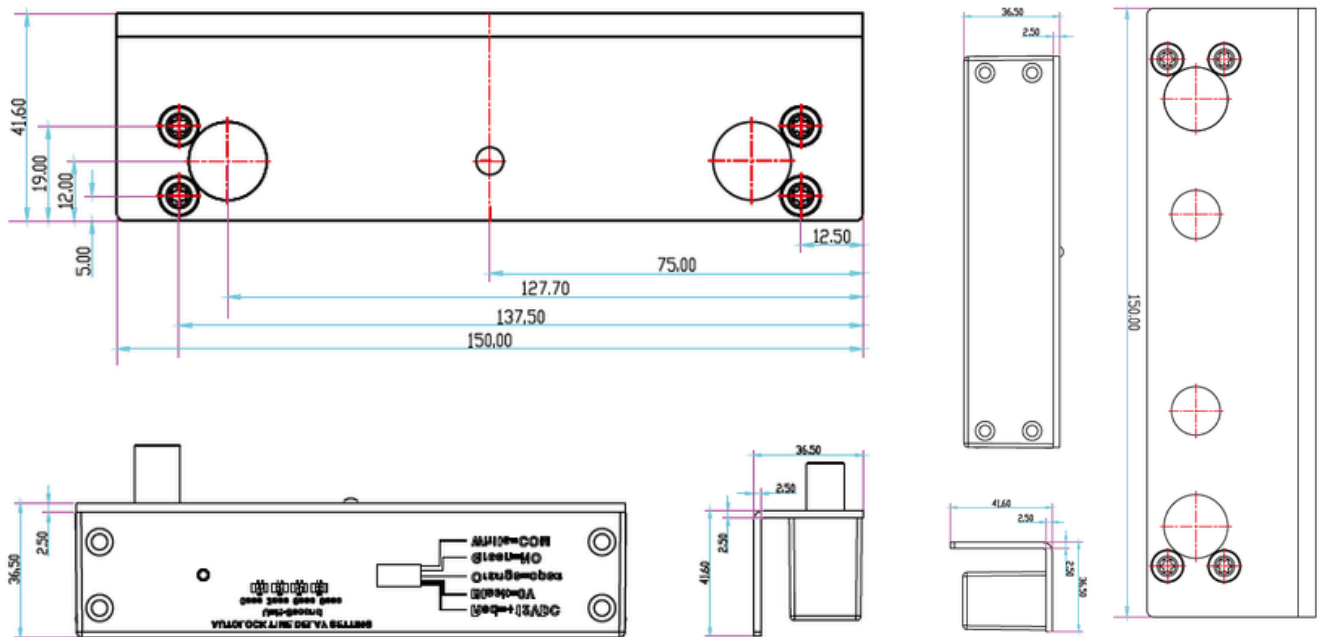
The B500U is a high-strength, all-metal electric bolt lock engineered specifically for fully frameless glass doors. Built for durability and reliability, it performs confidently in a wide temperature range, from high heat up to 60°C to freezing conditions as low as -20°C, thanks to its robust all-metal internal components.

The bolt is crafted from premium 304 stainless steel, featuring a solid 16mm diameter bar with an impressive 1000kg holding force, delivering strong anti-tampering and anti-burglary protection.

Equipped with a durable solenoid valve, photoelectric door status sensing, and low-power circuitry, the B500U ensures stable operation with minimal energy consumption. Its internal electronics are designed with vandal-resistant circuitry and auto-detection functions for added safety and reliability.

With these advanced features, the B500U Bolt Action Lock is ideal for secure environments using frameless glass doors, offering smooth performance, long operating life, and a high-end finish suitable for premium installations.

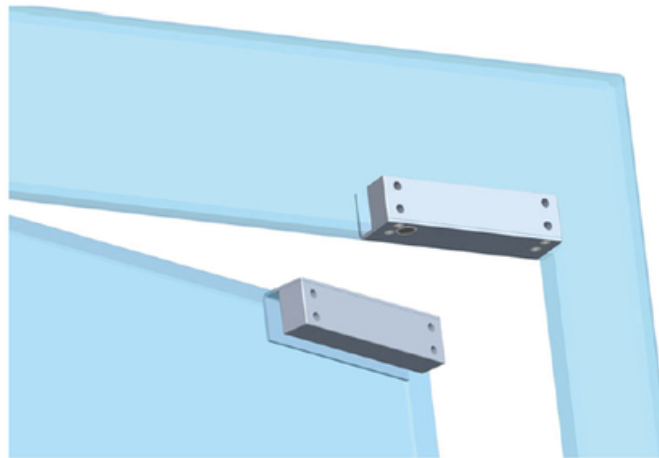
BOLT ACTION LOCK SERIES



Holding Force:	2200 lbs (1000kg)
Power Supply :	DC12V
Current Draw:	960 mA
Holding Current:	180 mA
Door Status Sensor:	N.O/ C.O.M
Door Signal:	Yes (Monitored, Built-In Photoelectric Sensor)
Time Delay :	YES (0, 3, 6, 9 secs)
Induction Distance:	Within 8mm
Security Type:	Power Off Unlock (Fail-Safe)
Application:	12mm Electrical Bolt for Fully Frameless Glass Door
Dimension:	150 (H) x 37 (D) x 40 (W) mm

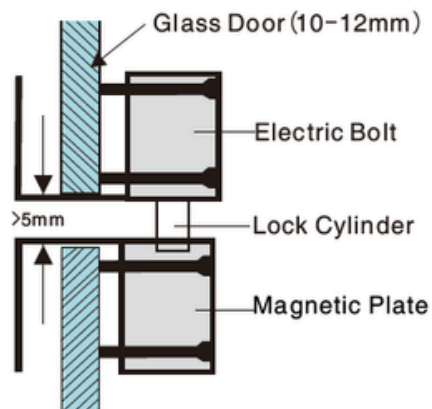
BOLT ACTION LOCK SERIES

INSTALLATION GUIDE:



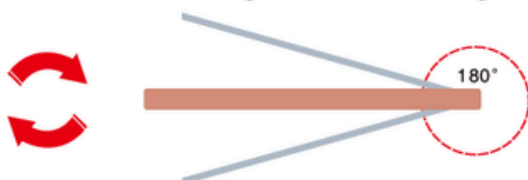
Frameless glass door

The thickness of glass door is 10-12mm



Suitable for double action doors

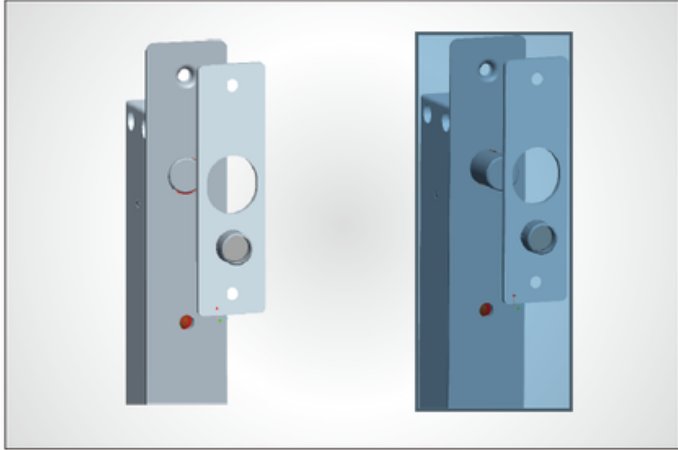
Electric bolts are specially designed for double action doors. They can also be installed on both inswing doors and outswing doors.



BOLT ACTION LOCK SERIES

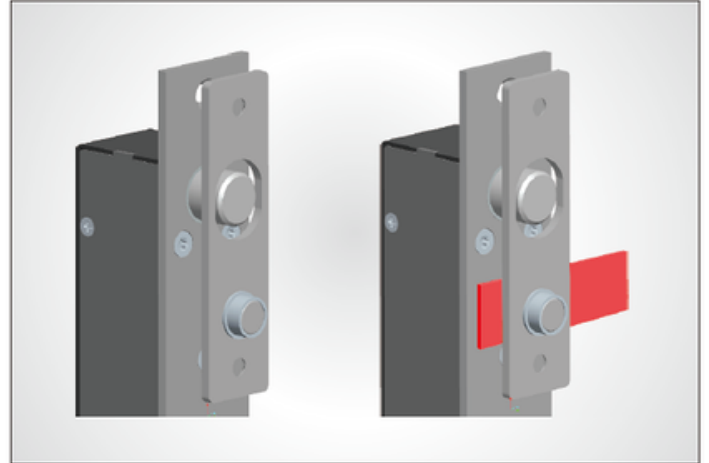
Auto-detective circuitry

This special auto-detective circuit of electric bolt keeps the bolt retracted while the door unlocked or improperly aligned until the door is properly closed.



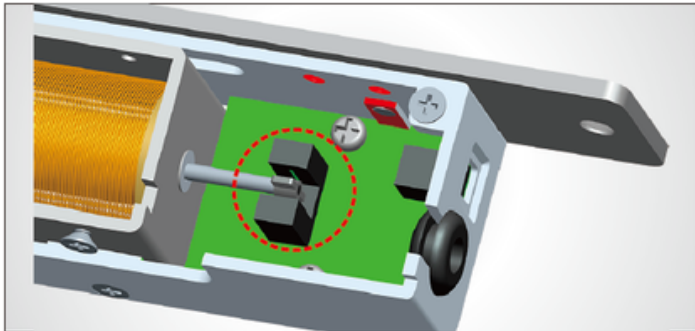
Vandal resistant circuitry

The reed sensor will automatically disconnect when the door is actually closed in order to enhance the security of the lock.



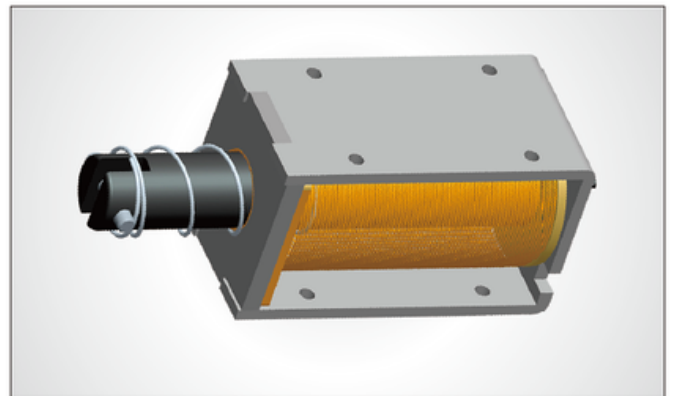
Photoelectric sensor control

Instead of using electric components, we use photoelectric components to make the bolt more stable and durable. at the same time, it can increase the lifetime of the electric bolt.



Ultra durable solenoid valve

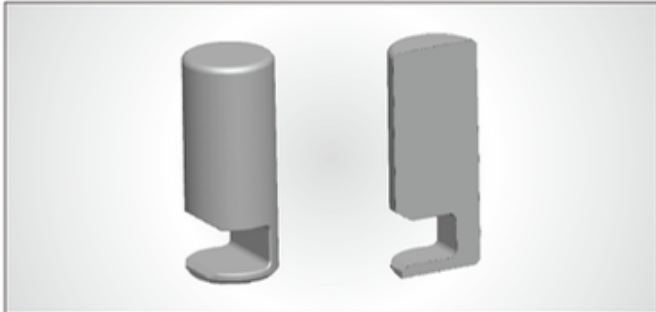
Tested for over 500,000 times, the specially designed solenoid valve can be used for 5 to 10 years.



BOLT ACTION LOCK SERIES

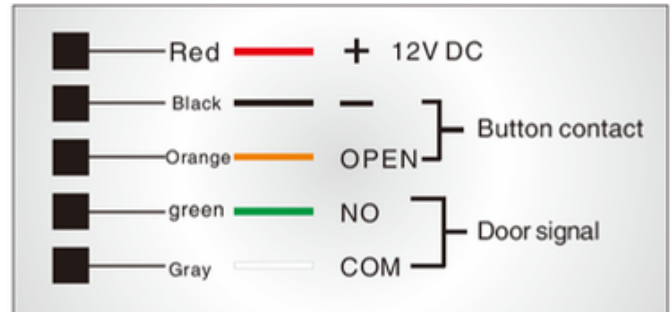
304 stainless steel solid bolt

With 304 stainless steel solid bolt, the electric bolt has 2000kg holding force. It is stronger and more durable under the harsh environment.



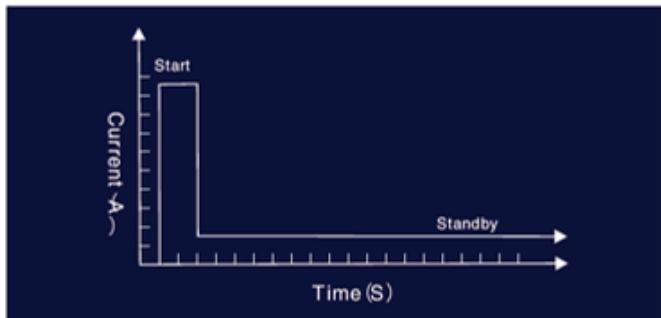
Connecting instructions

With the special auto-detective circuit, we advise you to connect our own open wires to open the door instead of shutting off the power directly.



Energy saving design

When the bolt is extended to keep the door locked, it draws only 0.2A in a holding mode down from 1.2A while the bolt is retracted. This design extends the life of the electric bolt.



All-metal lock body

The all-metal lock body and components make the lock stronger and more durable, which ensure the lock can work under the harsh environment. (Can order the lock work at the temperature of 60 °C or 40 °C below zero.)

