

DA-PT8610 WATERPROOF TOUCH EXIT BUTTON



The DA-PT8610 is a high-quality touch exit button, built with a durable aluminium frame and tempered glass for a sleek, modern look—far stronger than typical plastic models.

With N.O/N.C/COM outputs, it easily integrates into most wired access systems. Rated IP67, it's fully dustproof and waterproof — perfect for both indoor and outdoor use.

Tested to 1,000,000 activations and compatible with DC12V/24V, the compact 86 x 86 x 10 mm design offers reliable, long-term performance in professional environments.

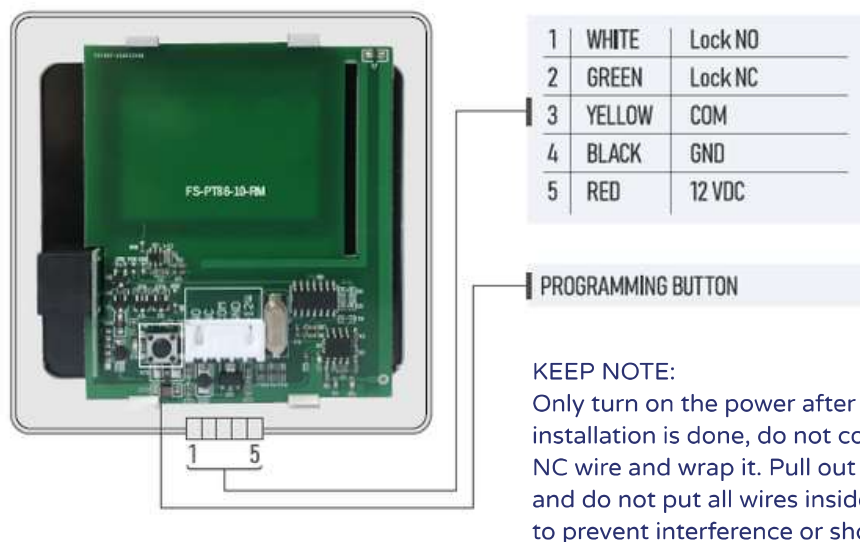
EXIT BUTTON SERIES



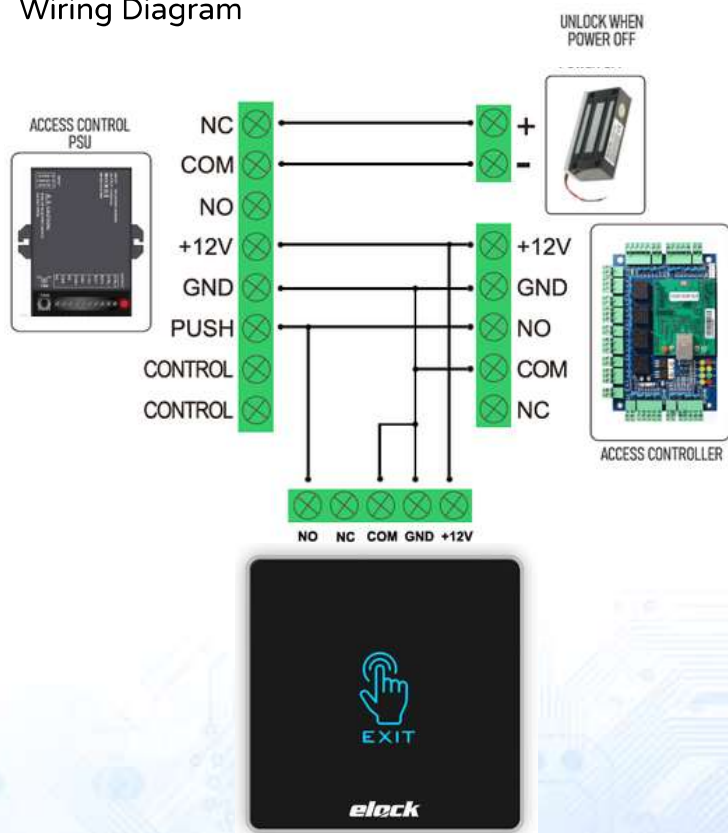
Power Supply	DC12V / DC24V
Contact Type:	N.O/ N.C/ COM
Frequency:	433.92 MHZ
Material:	Aluminium Frame+ Tempered Glass Panel
IP Rating:	IP67 (Dust Tight & Waterproof 1m)
Mechanical Life:	1,000,000 Tested Aging Test Qualified
LED:	Non Breathable
Dimension:	86 (L) x 86 (W) x 10 (H) mm

EXIT BUTTON SERIES

Connection Diagram



Wiring Diagram



Waterproof

IP67-Rated: Fully dust-tight and waterproof up to 1 meter depth for 30 minutes, making it ideal for outdoor use.

