

## EM201 RESETTABLE EMERGENCY DOOR RELEASE



The EM201 is a resettable emergency door release designed for reliable safety operation in critical situations.

Built with ABS plastic housing and designed for both flush mount and surface mount installations, it is a durable and versatile choice.

Featuring DPDT contacts (2NO/2NC/2COM), it provides enhanced wiring flexibility compared to standard models.

With a mechanical life of 500,000 cycles and an operating temperature range of -30°C to +70°C, the EM201 ensures long-lasting, dependable performance.

# EMERGENCY EXIT SERIES

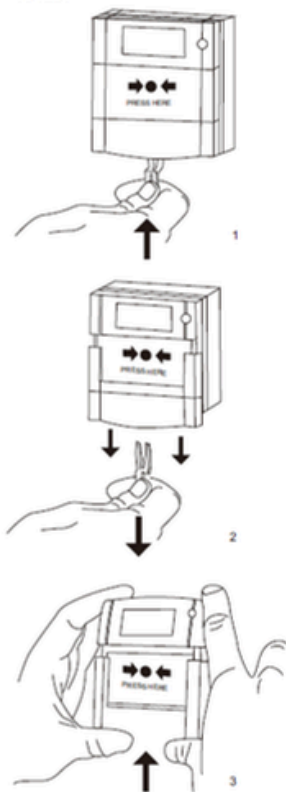


Power Supply:	DC12V / DC24V
Contact Rating:	5A @12/24 V DC
Contact Type:	DPDT (2NO/2NC/2COM)
Material:	ABS Plastic
Operating Temperature:	-30°C to +70°C
Mechanical Life:	500,000 Tested Aging Test Qualified
Mounting Type:	Surface Mount & Flush Mount
Dimension:	87 (H) x 52 (L) x 87 (W) mm

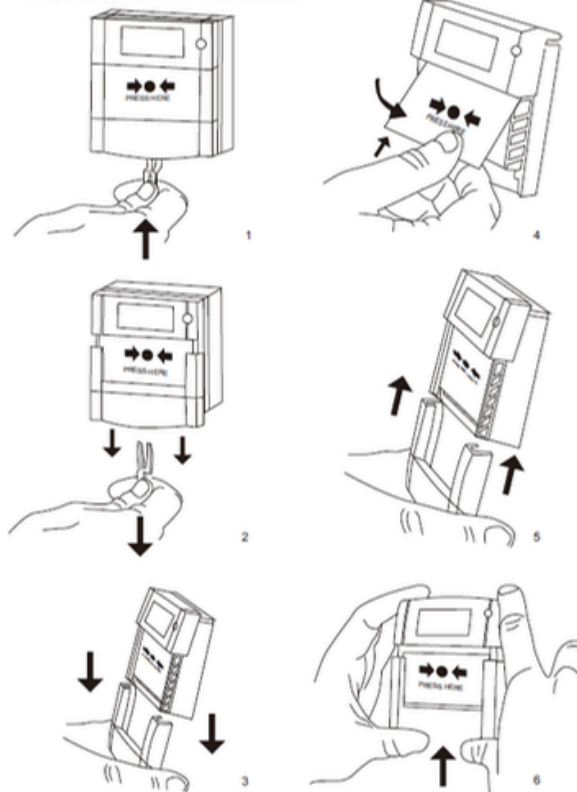
# EMERGENCY EXIT SERIES

## Installation Instruction

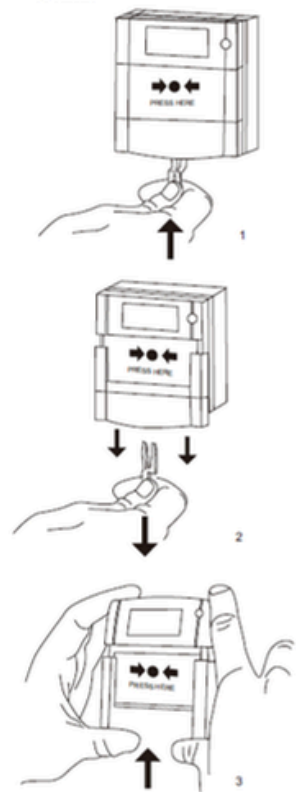
TO TEST



TO REPLACE GLASS / RESETTABLE ELEMENT



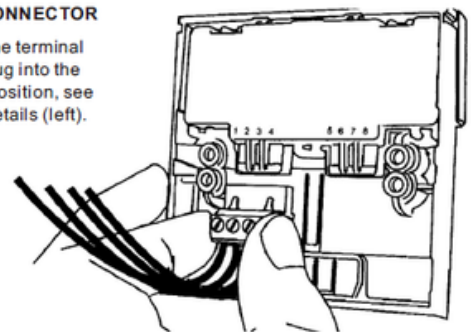
TO RESET



CONNECTION DETAILS	X(R)	X(R)B	X(R)L	X(R)LB
OR				

### PUSH FIT CONNECTOR

After wiring the terminal connector, plug into the appropriate position, see connection details (left).



CONNECTION DETAILS	XS	CONNECTION DETAILS	XD
OR			